

# \$650,000 - 330 Duncan Street, Somerset

MLS® #24025326

## \$650,000

5 Bedroom, 3.00 Bathroom, 2,788 sqft  
Residential on 6 Acres

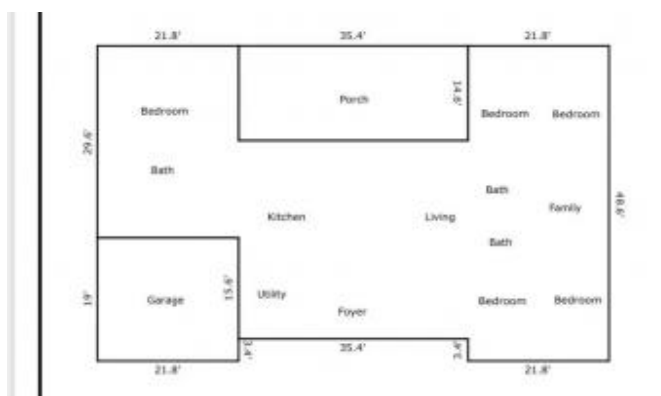
Rural, Somerset, KY

Country style living in the city of Somerset! This newly built home w/ attached garage as well as a detached garage is a rare find, especially sitting on 5.76 non-restricted acres at the end of Duncan Street! This custom built home features a split bedroom floor plan as well as an open concept living room and kitchen. The kitchen boasts of custom cabinets. To add to the character of the home, there is beautiful hardwood flooring throughout the home and tile in the bathrooms. The windows are Sun Brand. You will enjoy the spacious home that includes 5 bedrooms, (the Master offers plenty of space for privacy measuring 18 x 20. The primary bath consists of a double vanity, walk in shower and free standing bath tub.) 2.5 bathrooms, an office, kids living space and a bonus room! Enjoy your gently rolling private back yard on your future 14 x 35 back porch. Outside you will find a 30 x 40 x 12 detached garage with a large 10 x 16 garage door and two lean tos. One lean to is a green house. This lovely almost complete home is almost finished. Updated pictures will be added in March. The owner /builder is willing to finish the home.

Built in 2022

## Essential Information

MLS® #	24025326
Price	\$650,000
Bedrooms	5



Bathrooms	3.00
Full Baths	2
Half Baths	1
Square Footage	2,788
Acres	5.76
Year Built	2022
Type	Residential
Sub-Type	Single Family Residence
Style	Ranch
Status	Active

### **Community Information**

Address	330 Duncan Street
Area	045 - Pulaski County
Subdivision	Rural
City	Somerset
County	Pulaski
State	KY
Zip Code	42501

### **Amenities**

Parking	Driveway
# of Garages	2
Garages	Detached, Garage Faces Front, Attached, Garage Door Opener
View	Rural, Trees

### **Interior**

Interior Features	Ceiling Fan(s), Entrance Foyer, Bedroom First Floor, Primary First Floor, Walk-In Closet(s)
Appliances	Electric Water Heater
Heating	Electric, Heat Pump
Cooling	Heat Pump, Electric
Stories	One

### **Exterior**

Exterior Features	Porch
Windows	Insulated Windows
Roof	Shingle
Construction	HardiPlank Type, Other

Foundation                Block

## **School Information**

District                    Somerset Independent  
Elementary                Hopkins  
Middle                      Meece  
High                         Somerset

## **Additional Information**

Date Listed                December 6th, 2024

## **Listing Details**

Listing Office             Re/max Laketime Realty



The data relating to real estate for sale on this website comes in part from the Internet Data Exchange Program of the Bluegrass Realtors Multiple Listing Service. Real estate listings held by IDX Brokerage firms other than RE/Max Properties East are marked with the IDX logo or the IDX thumbnail logo and detailed information about them includes the name of the listing IDX Brokers. Information Deemed Reliable but Not GuaranteedÂ©2022 Bluegrass Realtors Multiple Listing Service. All rights reserved.