

# \$395,000 - 3626 Josephine Road, Sadieville

MLS® #24013981

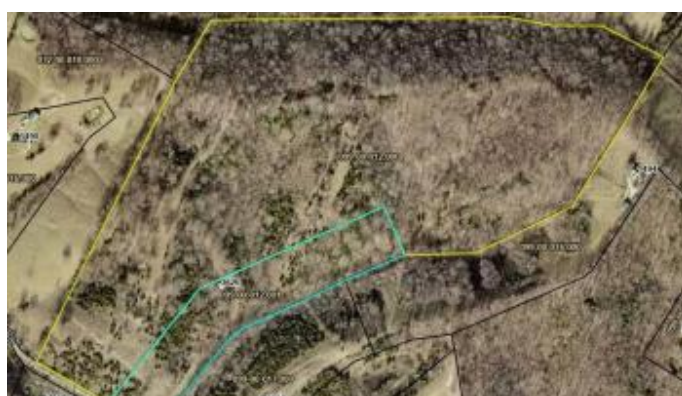
---

## \$395,000

Bedroom, 0.00 Bathroom,  
Land - Farm/Land on 73 Acres

Rural, Sadieville, KY

Discover your private oasis on this serene 73.476-acre farm. Nestled amidst expansive woods and open fields, this property boasts stunning landscapes and diverse wildlife, perfect for nature enthusiasts seeking peace and privacy. With seven strategically placed hunting stands, hunting aficionados will find ample opportunities for exciting adventures, with the owner sharing the best locations at closing! Choose from several potential home-building sites, each offering unique views of the picturesque surroundings. Imagine waking up to the sounds of nature, enjoying stunning sunsets, and savoring the peace of this secluded haven. Despite its seclusion, the farm is conveniently located near the Toyota manufacturing plant, providing excellent employment opportunities, and has easy access to the Interstate, keeping you connected to modern life. An additional adjoining 10 acre tract is available for purchase with this listing (See MLS 24012633). Whether you're looking for a family homestead, a recreational retreat, or a peaceful getaway, this property offers an endless number of options.



## Essential Information

MLS® #	24013981
Price	\$395,000
Bathrooms	0.00
Acres	73.48

Type	Land - Farm/Land
Sub-Type	Farm
Status	Active

### **Community Information**

Address	3626 Josephine Road
Area	005 - Scott County
Subdivision	Rural
City	Sadieville
County	Scott
State	KY
Zip Code	40370

### **Amenities**

View	Rural, Trees, Farm
------	--------------------

### **Exterior**

Lot Description	Hilly, Gently Rolling, Wooded
-----------------	-------------------------------

### **Additional Information**

Date Listed	July 8th, 2024
-------------	----------------

### **Listing Details**

Listing Office	Century 21 Advantage Realty
----------------	-----------------------------



The data relating to real estate for sale on this website comes in part from the Internet Data Exchange Program of the Bluegrass Realtors Multiple Listing Service. Real estate listings held by IDX Brokerage firms other than RE/Max Properties East are marked with the IDX logo or the IDX thumbnail logo and detailed information about them includes the name of the listing IDX Brokers. Information Deemed Reliable but Not Guaranteed ©2022 Bluegrass Realtors Multiple Listing Service. All rights reserved.